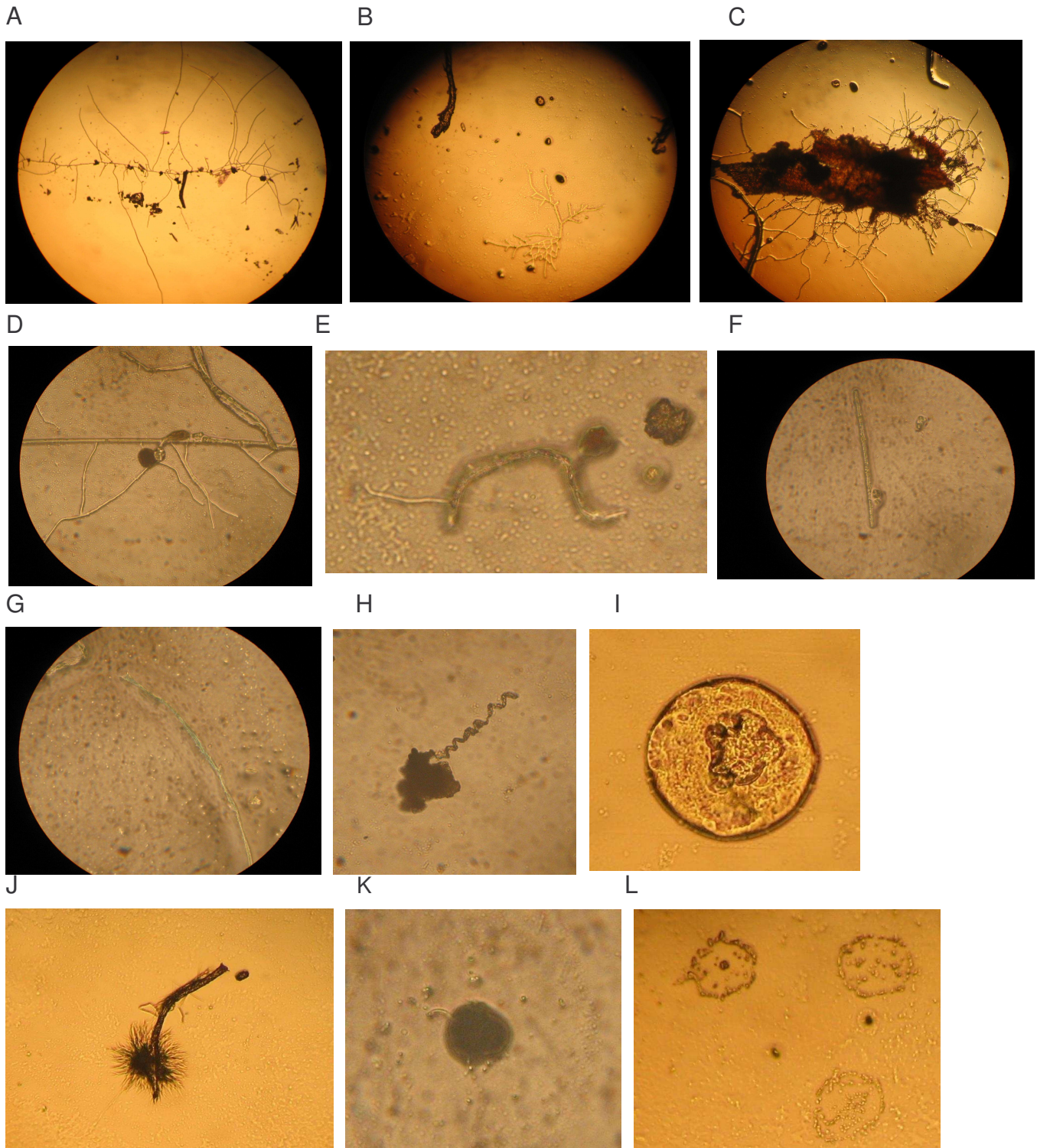


Figure 3. Microscopic observations - Hot water tank sample.



Microscope slide mounts show a diversity of structures including fungal and bacterial colonies (A, B); a filamentous mass of hot water tank biofilm (C); amber colored sporangia (D, E); green colored filaments (F, G); spiral-shaped sporogenic hyphae (*Actinoplanes*, H); a unicellular algal cell (I); an urchin-like colony of cyanobacteria (*Microcystis*) (J); a unicellular spore-like or algal structure? (K); and unknown circular arrangement of cells commonly found in both hot tank and shower samples (L).

algal cell (j); an unknown colony of cyanobacteria (heterocyst, k); a unicellular spore-like algal structure? (K); and unknown circular arrangement of cells commonly found in both hot tank and shower samples (L).