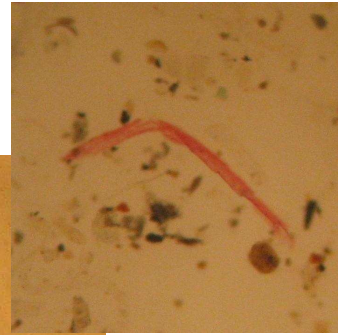


Figure 1. Morgellons-related particles recovered from Phase I hot water tank samples.

1.

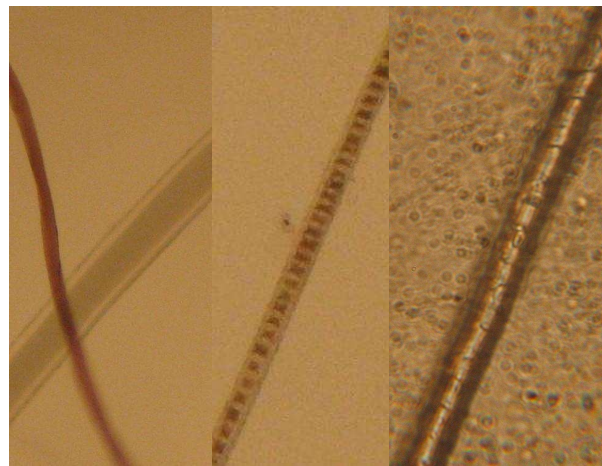


Ribbon-like filaments can also occur as non-UV luminescent fibers in various colors (red, blue/green, clear/gray).



Particle #1- UV ribbon-like fibers luminesce (red, blue, green) under 360nm UV light (<1mm X up to 10mm).

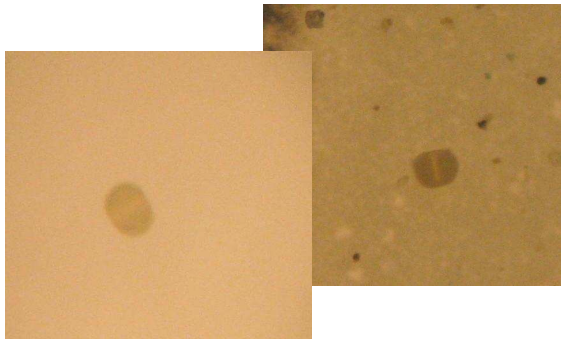
2.



Particle #2- Non-UV rounded fibers occur in "fuzzballs" or individual strands (red, blue, green, clear/gray). Fibers are smooth (>1mm X up to > 10mm).

A (non UV) B (UV or non UV) C (non UV)
Rounded fibers can also occur with the textures shown above; A- hollow-type (clear/gray), B- banded-type (brown/gray) can be UV or non-UV, or C- scaly/spiral-type (clear or colored).

3.



Particle #3- Gray, capsule-like structures (<1mm).

5.



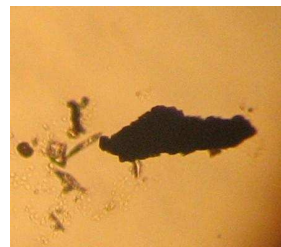
Particle #5- Worm-like tube structures (1 mm x 3 mm).

4.



Particle #4- Stellate (starfish-shaped) structures (< 3mm).

6.



Particle #6- Black specks/flakes (<3 mm).